

Successful return to service for your Van Hool Motor Coach Fleet

Check List

- With many coaches being stored for extended periods it will be necessary perform some visual checks.
- These visual check will assist with a successful launch back into service.
- Note: This list will assist with some of the most common items to inspect. It **Does Not** take away from doing a Pre-trip inspection.

Coach Checklist

Since many coaches may have been stored for an extended period the following checklist is offered in order to have a successful launch back into service.

- Check, clean and tighten all battery terminals.
- Check battery electrolyte levels. Load test batteries and replace if necessary
- Check, tighten and inspect major electrical terminals and cables.
- Check all fluid levels including, engine, transmission, power steering, coolant, differential, and windshield washer fluid.
- Check and inspect all belts and hoses.
- Check all tire pressure including the spare tire.
- Grease and lubricate all undercarriage points including the drive line and steering components.
- Clean and service the restroom holding tank.
- Once coach is running, check HVAC system refrigerant and oil levels.
- Check all HVAC motor operation.
- Inspect and service the auxiliary heater unit
- Drain all air tanks.
- Inspect and replace the air system filter dryer cartridge
- Inspect DEF Quality, DEF tank and DEF lines for leaks and replace DEF filter.
- Change engine oil and filters, fuel filters. (If necessary)
- Inspect windshield wiper operation and blade condition.
- Check and lubricate brake treadle assembly. Perform Brake test.
- Inspect all interior and exterior lights, and operation.
- Raise and lower the coach if equipped, rear raise and tag release. Operate kneeling system.
- Driver shades, mirrors, and steering column adjustments.
- Check Audio and video equipment.
- If Detroit or Cummins software is available, perform a forced regen and NOX efficiency test. Check for engine codes.
- Clean interior evaporator filters.
- Ensure that all passenger and wheelchair restraint, belts are in the coach.
- If lift equipped, check fluids, wiring, manual pump, valves, etc., as well cycling the lift, to ensure proper operation.
- Test drive coach.

*For additional information, please refer to appropriate Van Hool Maintenance or Operator Manuals.

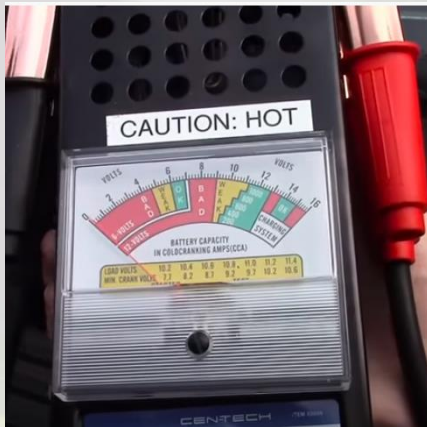
Check List

- Step 1:
 - Check, clean and tighten all battery terminals.



Check List

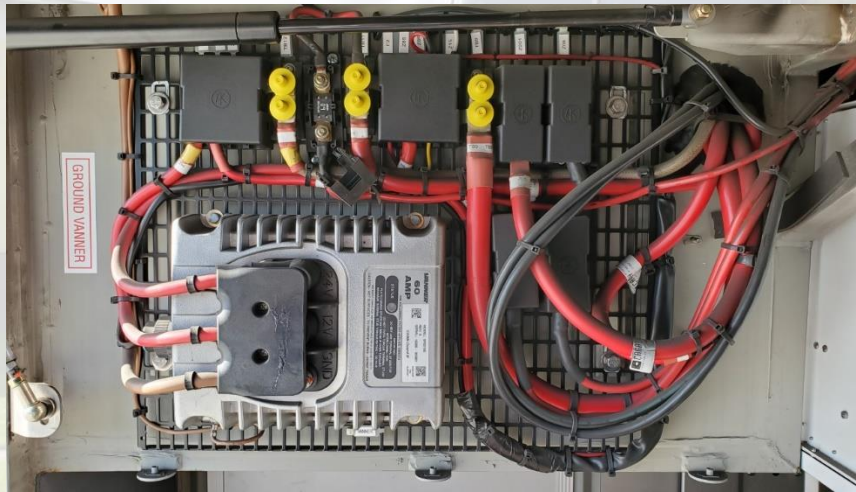
- Step 2:
 - Check battery electrolyte levels. Load test batteries and replace if necessary.



STATE OF CHARGE	VS	SPECIFIC GRAVITY	VS	VOLTAGE
100%		1.265		12.62(6.3)
90%		1.251		12.54
80%		1.236		12.45
75%		1.225		12.40(6.2)
60%		1.206		12.27
50%		1.190		12.18
25%		1.155		11.97(6.0)
DISCHARGED		1.120		11.76

Check List

- Step 3:
 - Check, tighten and inspect major electrical terminals and cables.



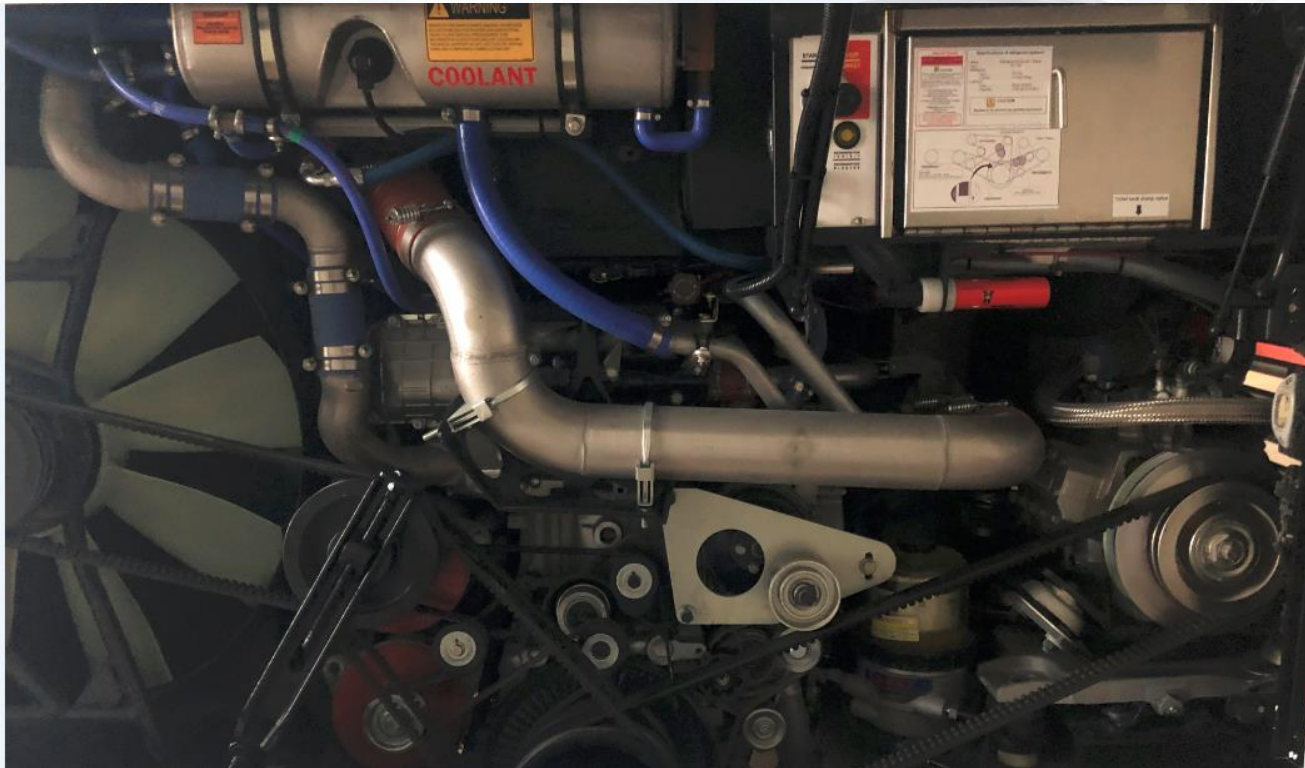
Check List

- Step 4:
 - Check all fluid levels including, engine, transmission, power steering, coolant, differential, and windshield washer fluid



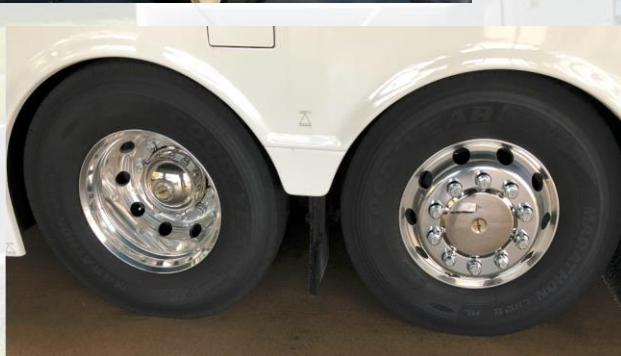
Check List

- Step 5:
 - Check and inspect all belts and hoses.



Check List

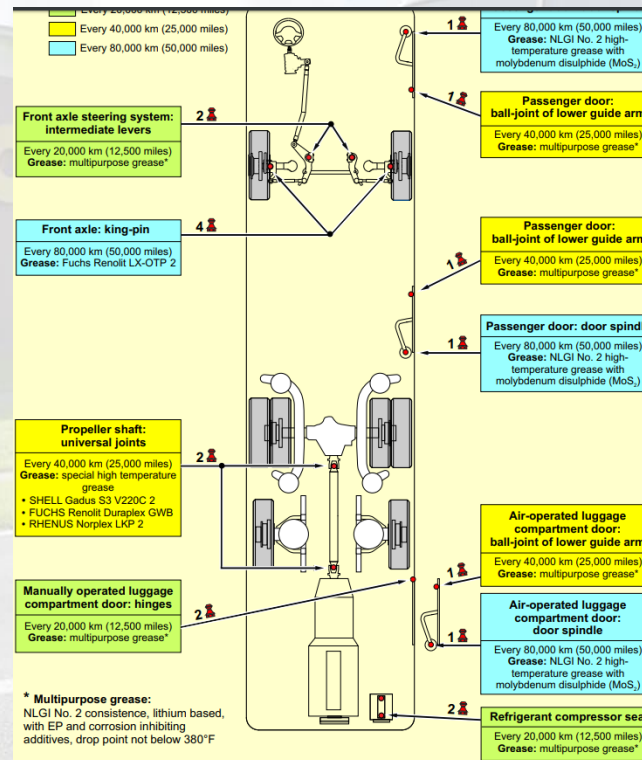
- Step 6:
 - Check all tire pressure including the spare tire.



Check List

- Step 7:

- Grease and lubricate all undercarriage points including the drive line and steering components.



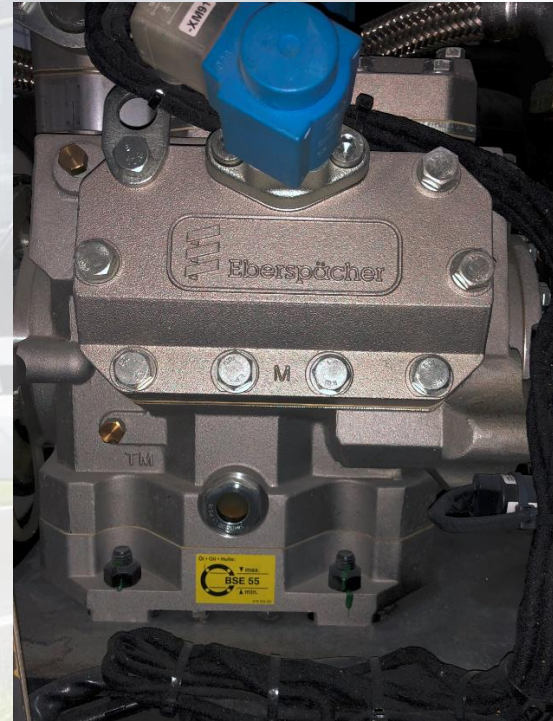
Check List

- Step 8:
 - Clean and service the restroom holding tank.



Check List

- Step 9:
 - Once coach is running, check HVAC system refrigerant and oil levels.



Check List

- Step 10:
 - Check all HVAC motor operation.



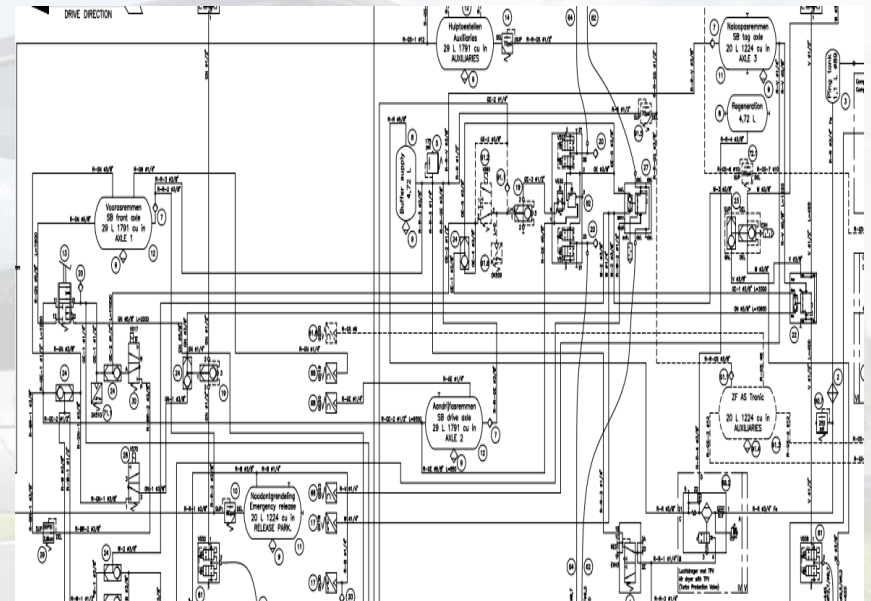
Check List

- Step 11:
 - Inspect and service the auxiliary heater unit.



Check List

- Step 12:
 - Drain all air tanks.



Check List

- Step 13:
 - Inspect and replace the air system filter dryer cartridge.



Check List

- Step 14:
 - Inspect, DEF Tank and DEF Lines for leaks and replace DEF filter. Inspect and test DEF Quality



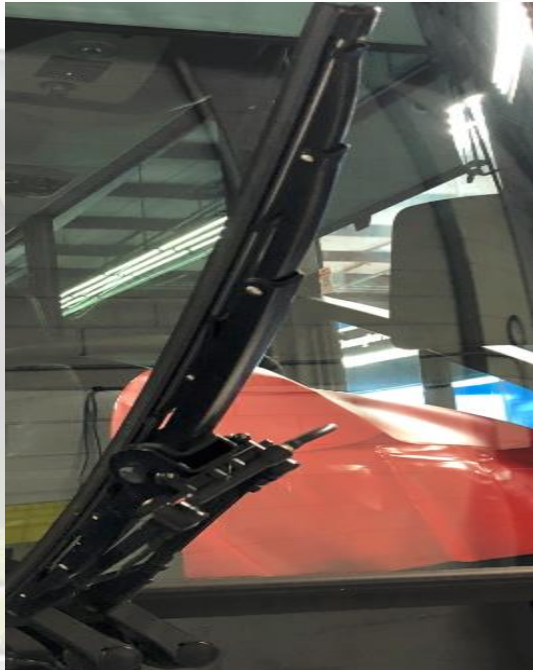
Check List

- Step 15:
 - Change engine oil and filters, fuel filters.



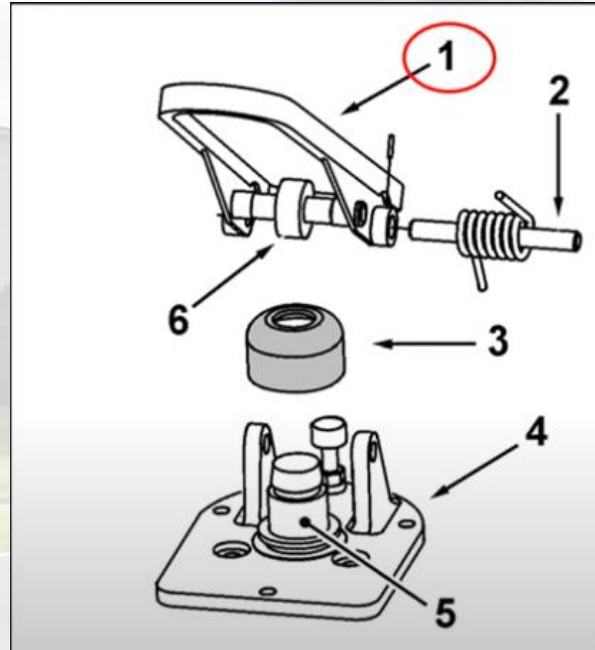
Check List

- Step 16:
 - Inspect windshield wiper operation and blade condition.



Check List

- Step 17:
 - Check and lubricate brake treadle assembly. Perform Brake test procedure



Check List

- Step 18:
 - Inspect all interior and exterior lights, and operation.



Check List

- Step 19:
 - Raise and lower the coach if equipped, rear raise and tag release. Operate kneeling system.



Check List

- Step 20:
 - Inspect Driver shades, Mirrors, and Steering column adjustments.



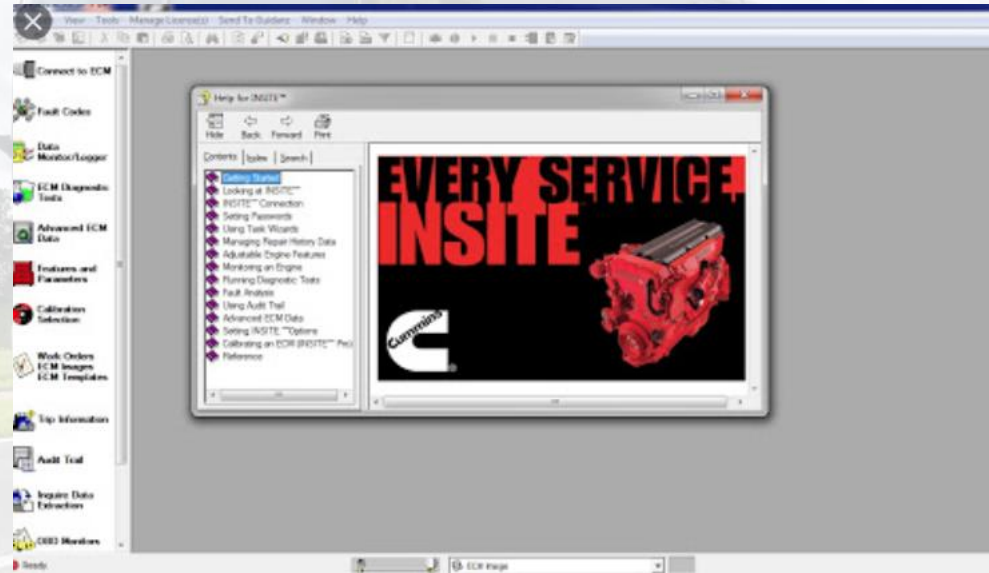
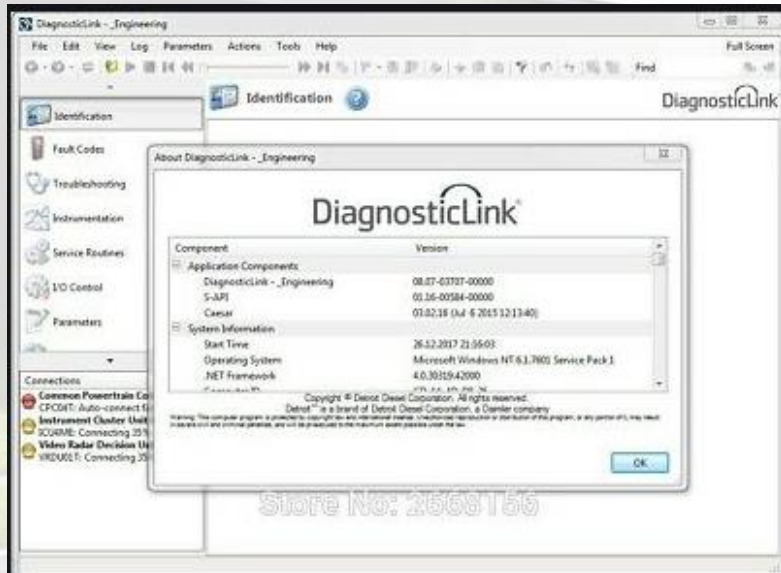
Check List

- Step 21:
 - Check Audio and video equipment.



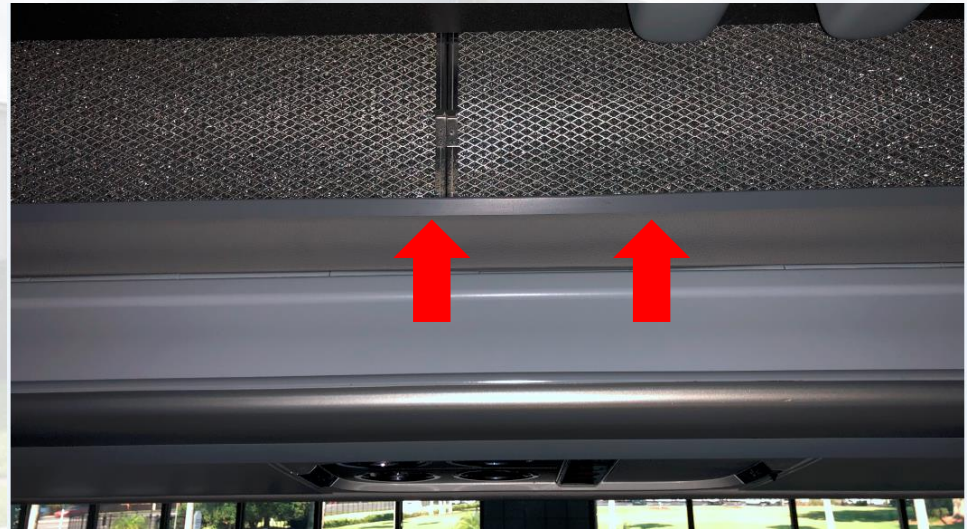
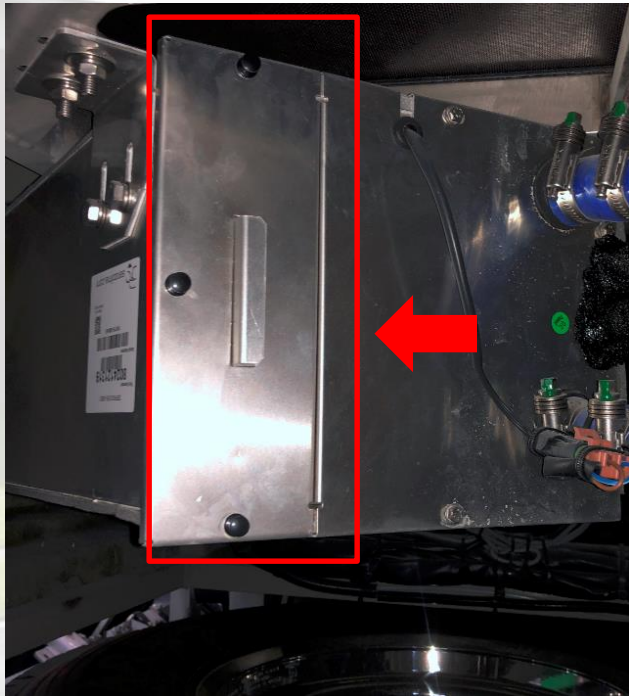
Check List

- Step 22:
 - If Detroit or Cummins software is available, perform a forced regen and NOX efficiency test. Check for engine codes.



Check List

- Step 23:
 - Clean interior evaporator filters.



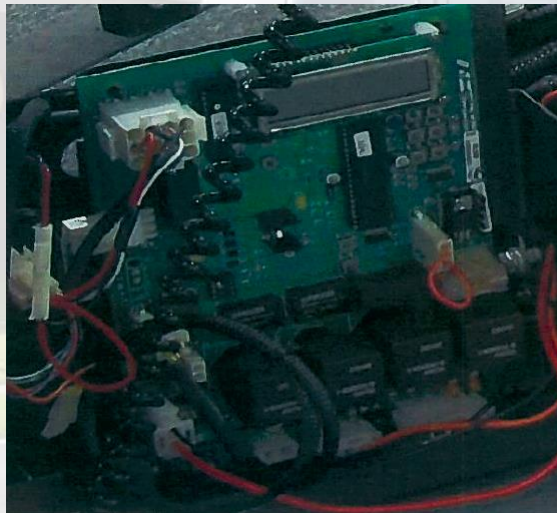
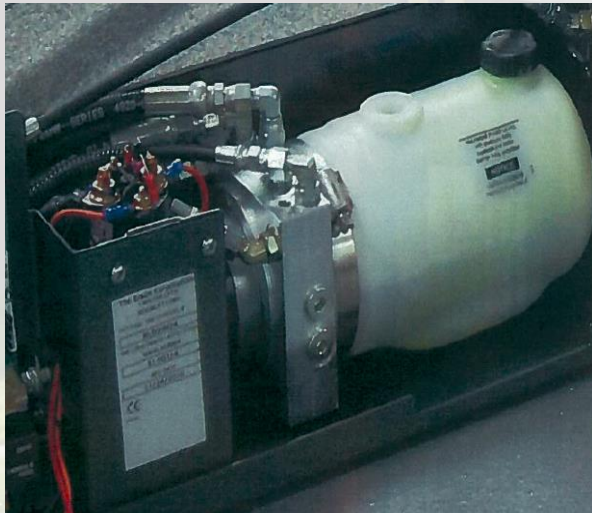
Check List

- Step 24:
 - Ensure that all passenger and wheelchair restraint, belts are in the coach.



Check List

- Step 25:
 - If lift equipped, check fluids, wiring, manual pump, valves, etc., as well cycling the lift, to ensure proper operation.



Check List

- Step 26:
 - Test drive coach.



Note: Long test drive will assist in cleaning rust off the rotors.

Coach Checklist

Since many coaches may have been stored for an extended period the following checklist is offered in order to have a successful launch back into service.

- Check, clean and tighten all battery terminals.
- Check battery electrolyte levels. Load test batteries and replace if necessary
- Check, tighten and inspect major electrical terminals and cables.
- Check all fluid levels including, engine, transmission, power steering, coolant, differential, and windshield washer fluid.
- Check and inspect all belts and hoses.
- Check all tire pressure including the spare tire.
- Grease and lubricate all undercarriage points including the drive line and steering components.
- Clean and service the restroom holding tank.
- Once coach is running, check HVAC system refrigerant and oil levels.
- Check all HVAC motor operation.
- Inspect and service the auxiliary heater unit
- Drain all air tanks.
- Inspect and replace the air system filter dryer cartridge
- Inspect DEF Quality, DEF tank and DEF lines for leaks and replace DEF filter.
- Change engine oil and filters, fuel filters. (If necessary)
- Inspect windshield wiper operation and blade condition.
- Check and lubricate brake treadle assembly. Perform Brake test.
- Inspect all interior and exterior lights, and operation.
- Raise and lower the coach if equipped, rear raise and tag release. Operate kneeling system.
- Driver shades, mirrors, and steering column adjustments.
- Check Audio and video equipment.
- If Detroit or Cummins software is available, perform a forced regen and NOX efficiency test. Check for engine codes.
- Clean interior evaporator filters.
- Ensure that all passenger and wheelchair restraint, belts are in the coach.
- If lift equipped, check fluids, wiring, manual pump, valves, etc., as well cycling the lift, to ensure proper operation.
- Test drive coach.

*For additional information, please refer to appropriate Van Hool Maintenance or Operator Manuals.

Conclusion

- As anything can happen with equipment that has been stored for long periods of time. This Check list will assist with some of the common concerns that we have seen. It will not cover every situation but will give you a good starting point to get your Fleet back on the road.

*For additional information, please refer to appropriate Van Hool Maintenance or Operator Manuals.